



# CAPABILITY STATEMENT

## SERVICES

Structural  
Civil  
Building Systems | MEP  
Project Management

## ESTABLISHED

1973

## OWNERSHIP

Employee-owned (ESOP)

## PROJECT TYPES

New Construction  
Adaptive Reuse  
Historic Restoration  
Addition | Renovations  
Energy Studies  
Site Development  
Water Quality  
Transportation  
Engineering  
Design | Build  
Design Reviews  
Facility Condition-  
Assessment  
HVAC Modernization  
Seismic Studies | Upgrades

## EDM DATA

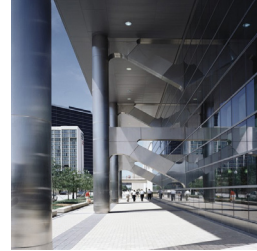
Business License in MO, IL  
and 20 other states.  
SAM-Registered Small  
Business

UEI E15TJYLK417  
DUNS 064644586  
E-Verify 2190818  
CAGE 8Y777  
NAICS 541330 *Eng*  
541310 *Arch*

## CONTACT

Chris Kerckhoff, LEED, AP  
BD+C | Vice President  
500 N Broadway  
Suite 1200  
St. Louis, MO 63102  
314.335.6915  
jck@edm-inc.com

www.edm-inc.com



## WHO WE ARE

EDM is an employee-owned professional design firm providing structural, civil, building systems (mechanical, electrical, plumbing) engineering and project management services, as well as complementary architectural services.

Past performance evaluations state:

- "Project management listens to the client and communicates these needs to the entire team."
- "EDM has the ability to manage the entire project, from start to finish, coordinating consultants' efforts to meet one common goal."
- "Meets or exceeds schedules."
- "Ensures that the project will be successful."
- "EDM never missed a deadline."

## WHAT SETS US APART

- EDM encompasses engineering, architecture and project management under one roof, providing you with complete project integration.
- The breadth of project experience of our staff, from office renovation to 70,000 seat stadiums, provides EDM clients with virtually unlimited project capabilities.
- Our size and employee ownership provide opportunity and incentive for direct communication between our Clients and Principals, with response time in hours, not days or weeks.

## FEDERAL CLIENTS

US Air Force

- Scott Air Force Base  
- Two consecutive 5- year IDIQ Contracts

▪ Whiteman AFB Personnel Housing

US Army | Publications Distribution Center Renovation

USACE | US Army Corps of Engineers

US Department of Energy

▪ Bendix Steam Line

US Department of Veterans Affairs

▪ Veterans Hospitals - Various Renovations

▪ Missouri Veterans Home

US Marine Corps | El Toro Base Family Housing

Federal Reserve Bank of St. Louis

GSA | US General Services Administration

▪ Four 5-year IDIQ Contracts | Renovations

▪ Thomas F. Eagleton US Courthouse

▪ Robert A. Young Federal Building Renovations

NGA | National Geospatial-Intelligence Agency

▪ Three 5-year IDIQ Contracts

National Park Service

## MUNICIPAL | COUNTY | STATE CLIENTS

CDB | Illinois Capital Development Board

IDOT | Illinois Department of Transportation

MSD | Metropolitan St. Louis Sewer District

MoDOT | Missouri Department of Transportation

▪ St. Louis Lambert International Airport

▪ National Guard Fredericktown Armory Renovation

▪ Correctional Centers - Multiple Renovations

▪ Wainwright State Building Historic Renovation

City of Ferguson

St. Louis County

City of Frontenac

St. Charles County

City of Maryland Heights

City of Ladue

City of St. Charles

City of St. Louis

City of St. Peters

**ENGINEERING**  
Creative application of science,  
mathematics and experience

**DESIGN**  
Development of a sound  
concept for a project

**MANAGEMENT**  
Administration of a team to  
achieve success

